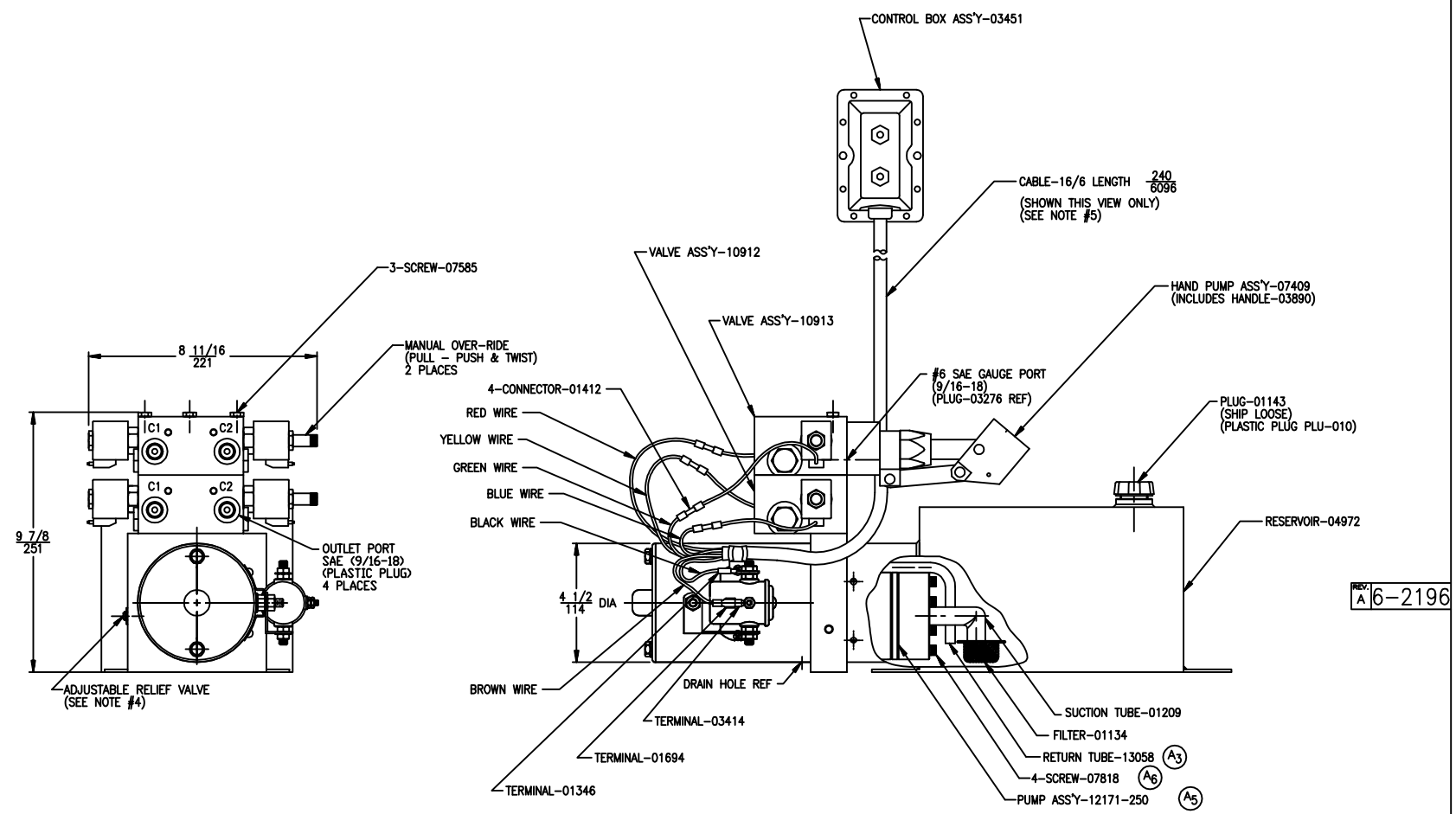
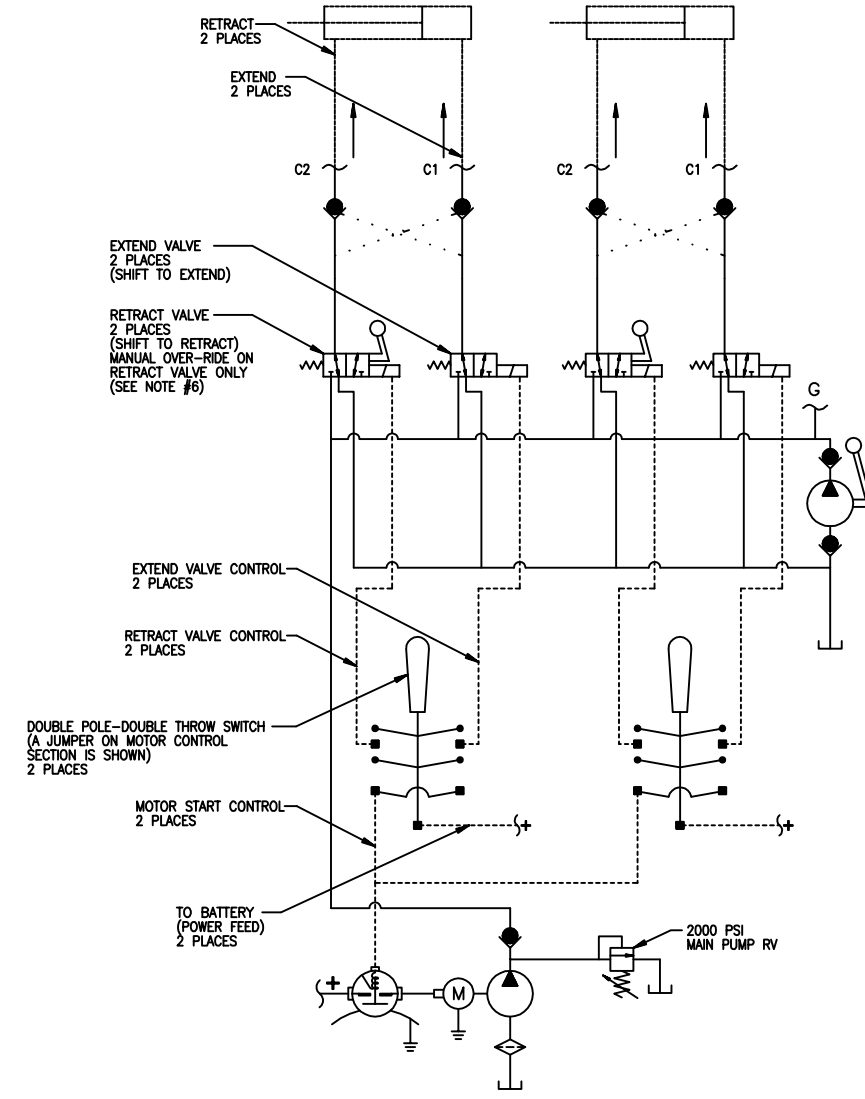
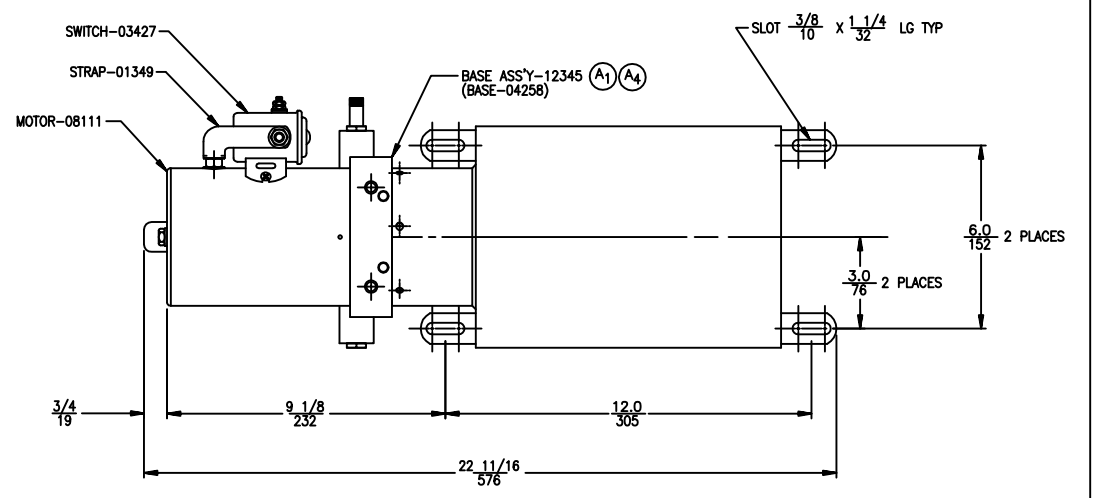
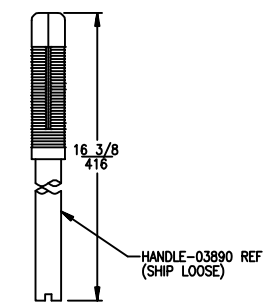


REV	DESCRIPTION	DATE	BY	APP
1	REMOVED PUMP ASSY-04269			
2	REVISED NOTE #3A & #3C			
3	RETURN TUBE-13058 WAS 01203			
4	ADDED BASE ASSY-12345	09-09-02	TPG	
5	ADDED PUMP ASSY-12171-250			
6	ADDED 4-SCREW-07818			
7	GENERAL REVISIONS			



NOTES: ELECTRICAL & HYDRAULIC SCHEMATIC

6. TO RETRACT UNDER LACK OF POWER:
  - A. PULL & TWIST MANUAL OVER RIDE ON RETRACT VALVE.
  - B. INSERT HANDLE INTO HAND PUMP RECEIVER AND PUMP UNTIL FULLY RETRACTED.
  - C. TWIST & RELEASE MANUAL OVER-RIDE BACK TO ORIGINAL POSITION (MANUAL OVER-RIDE MUST BE IN RETRACTED POSITION FOR SYSTEM TO OPERATE IN NORMAL MODE)
5. CONNECT WIRES FROM CORD AS FOLLOWS:
  - BLACK WIRE...TO POSITIVE SIDE OF THE SOLENOID
  - BROWN WIRE...TO SMALL TOP POST OF SOLENOID
  - RED WIRE...TO TOP VALVE "C1" SIDE
  - GREEN WIRE...TO TOP VALVE "C2" SIDE
  - YELLOW WIRE...TO BOTTOM VALVE "C1" SIDE
  - BLUE WIRE...TO BOTTOM VALVE "C2" SIDE
4. RELIEF VALVE ADJUSTMENT INSTRUCTIONS:
  - A. LOOSEN JAM NUT
  - B. ADJUST PRESSURE
    1. TURN SCREW CLOCKWISE TO INCREASE PRESSURE
    2. TURN SCREW COUNTER CLOCKWISE TO DECREASE PRESSURE
 NOTE: OUTLET PORT (PRESSURE) FLOW MUST BE BLOCKED TO MAKE RELIEF VALVE OPERATE WHILE ADJUSTING
  - C. TIGHTEN JAM NUT
3. SPECIFICATIONS:
  - A. DISPLACEMENT: 0.128 IN<sup>3</sup>/REV
  - B. UNLESS OTHERWISE SPECIFIED: RELIEF VALVE FACTORY SET AT: 2000 PSI (138 BARS)
  - C. MISC. RESERVOIR TO BE PAINTED BLACK
2. PROJECTION: THIRD ANGLE
1. DIMENSIONS: INCH MILLIMETER



CLEGG IND.		NAME	
NON-SPECIFIED TOLERANCES:		PUMP UNIT, M-3530-0106, HORZ MT., 12 VDC, DOUBLE VALVE ASSY W/HAND PUMP	
XX ±		SCALE	DATE
.XXX ±		1/4	03/30/99
FRACT. ±		DRAWN	APPROVED
ANGLES ±		DCM	
BREAK EDGES .005-010		MONARCH HYDRAULICS INC	PART NO
REMOVE BURRS		GRAND RAPIDS, MICHIGAN	6-2196

THIS PRINT IS THE PROPERTY OF MONARCH HYDRAULICS, INC. AND IS NOT TO BE USED DIRECTLY OR INDIRECTLY IN ANY WAY DETRIMENTAL TO OUR INTEREST