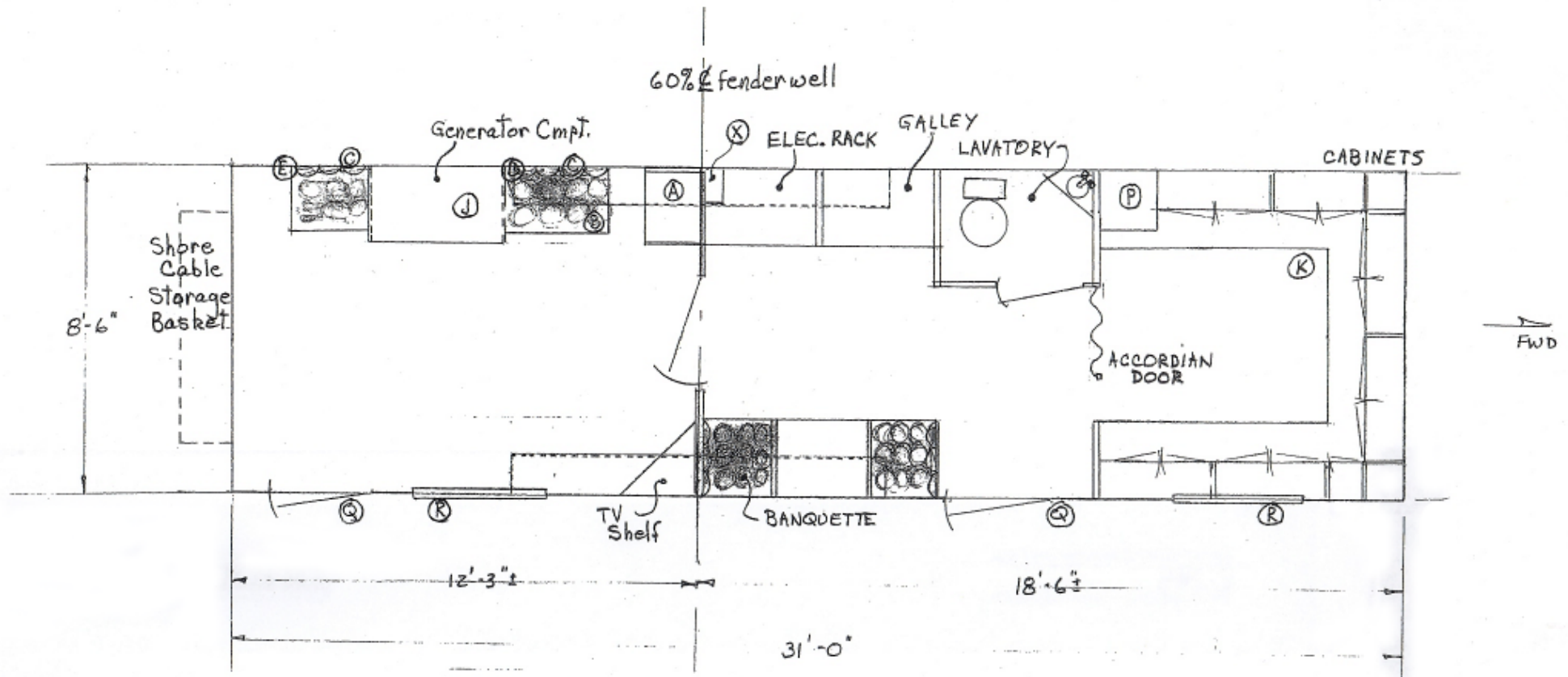


Dorchester County Command Post Plan View



NOTES

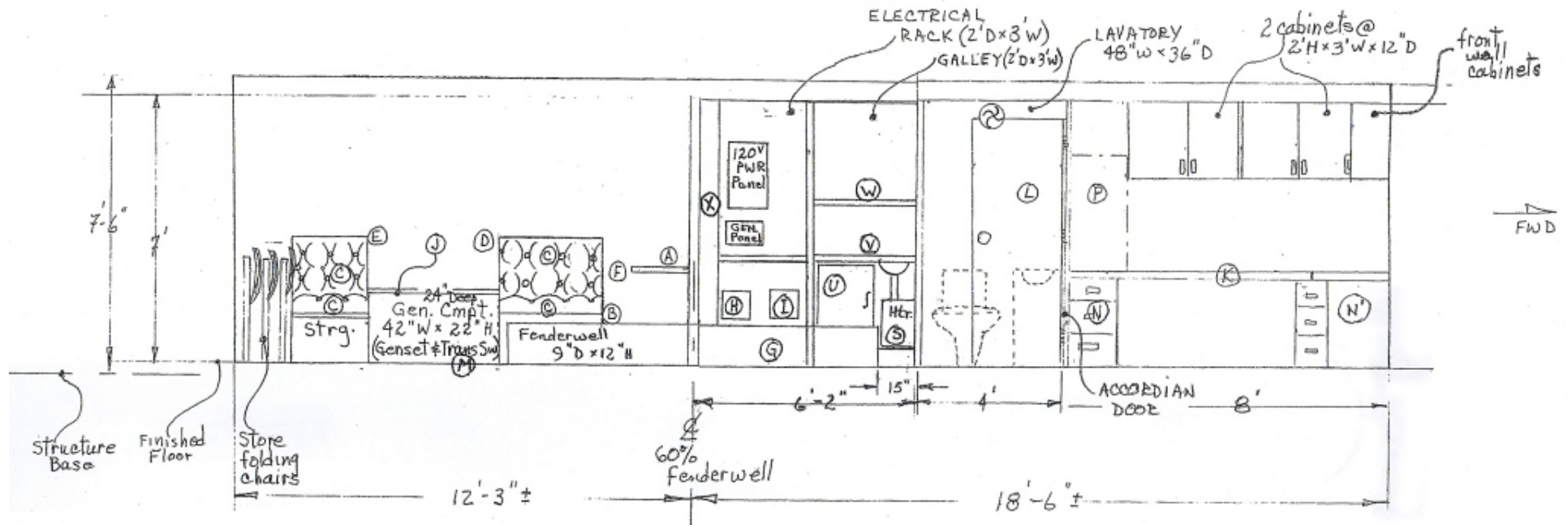
A - Worktop (30" H x 18" D x 24" W)
 B - Bench Seat (16" H x 20" D x 33" W)
 C - 4" Foam Cushion
 D - Seat Back (22" H x 33" W)
 E - Same as D; 24" W
 F - Approx. 9" between seat & worktop
 G - Batteries in front of fenderwell
 H - Charger/Converter
 I - Inverter
 J - Worktop
 K - Worktop (2' W x 8' L x 30" H)
 L - 28" x 78" Door

M - Transfer Switch
 N - File Cabinet
 N' - File Cabinet (in corner)
 P - Radio Rack (18" W x 3' H)
 Q - 32" x 78" Door
 R - 42" W x 18" H slider window; 36" above floor
 S - RV Heater; 12" x 12"; ducted (14 x 14 x 24 space)
 T - Fuel tank w/fuel; wt. = 400 #
 U - Refrigerator
 V - Countertop w/sink; space for coffeepot
 W - Shelf for Microwave
 X - Cable Chase

Clegg Industries, Inc.
 808 Bobwhite Road
 Victoria, TX 77905

Dorchester County
 Command Post
 Plan View
 * Not To Scale

Dorchester County Command Post Drivers-Side Interior



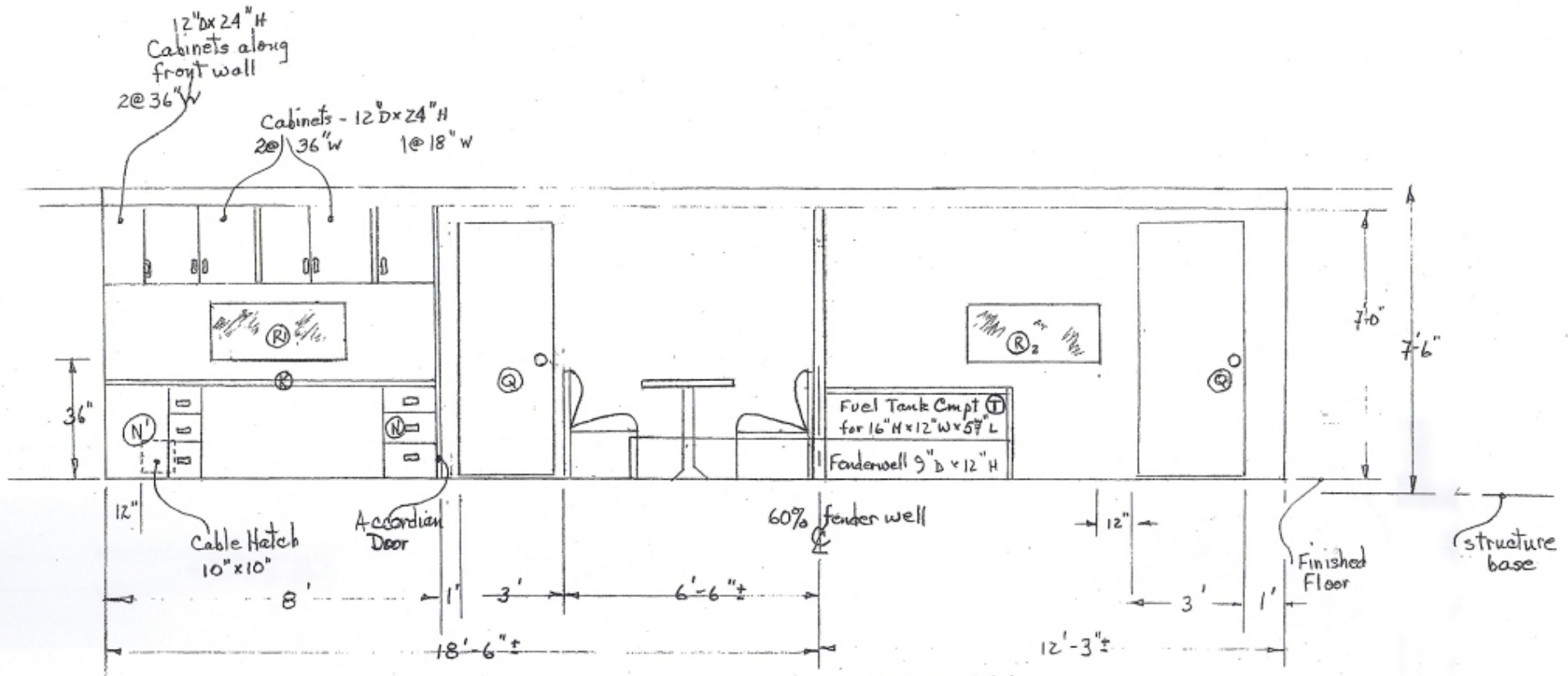
NOTES

- | | |
|--|---|
| A - Worktop (30" H x 18" D x 24" W) | M - Transfer Switch |
| B - Bench Seat (16" H x 20" D x 33" W) | N - File Cabinet |
| C - 4" Foam Cushion | N' - File Cabinet (in corner) |
| D - Seat Back (22" H x 33" W) | P - Radio Rack (18" W x 3' H) |
| E - Same as D; 24" W | Q - 32" x 78" Door |
| F - Approx. 9" between seat & worktop | R - 42" W x 18" H slider window; 36" above floor |
| G - Batteries in front of fenderwell | S - RV Heater; 12" x 12"; ducted (14 x 14 x 24 space) |
| H - Charger/Converter | T - Fuel tank w/fuel; wt. = 400 # |
| I - Inverter | U - Refrigerator |
| J - Worktop | V - Countertop w/sink; space for coffee pot |
| K - Worktop (2' W x 8' L x 30" H) | W - Shelf for Microwave |
| L - 28" x 78" Door | X - Cable Chase |

Clegg Industries, Inc.
808 Bobwhite Road
Victoria, TX 77905

Dorchester County
Command Post
Drivers Side Interior
* Not To Scale

Dorchester County Command Post Curb-Side Interior



NOTES

- | | |
|--|---|
| A - Worktop (30" H x 18" D x 24" W) | M - Transfer Switch |
| B - Bench Seat (16" H x 20" D x 33" W) | N - File Cabinet |
| C - 4" Foam Cushion | N ¹ - File Cabinet (in corner) |
| D - Seat Back (22" H x 33" W) | P - Radio Rack (18" W x 3' H) |
| E - Same as D; 24" W | Q - 32" x 78" Door |
| F - Approx. 9" between seat & worktop | R - 42" W x 18" H slider window; 36" above floor |
| G - Batteries in front of fenderwell | S - RV Heater; 12" x 12"; ducted (14 x 14 x 24 space) |
| H - Charger/Converter | T - Fuel tank w/fuel; wt. = 400 # |
| I - Inverter | U - Refrigerator |
| J - Worktop | V - Countertop w/sink; space for coffeepot |
| K - Worktop (2' W x 8' L x 30" H) | W - Shelf for Microwave |
| L - 28" x 78" Door | X - Cable Chase |

Clegg Industries, Inc.
808 Bobwhite Road
Victoria, TX 77905

Dorchester County
Command Post
Curb Side Interior
* Not To Scale