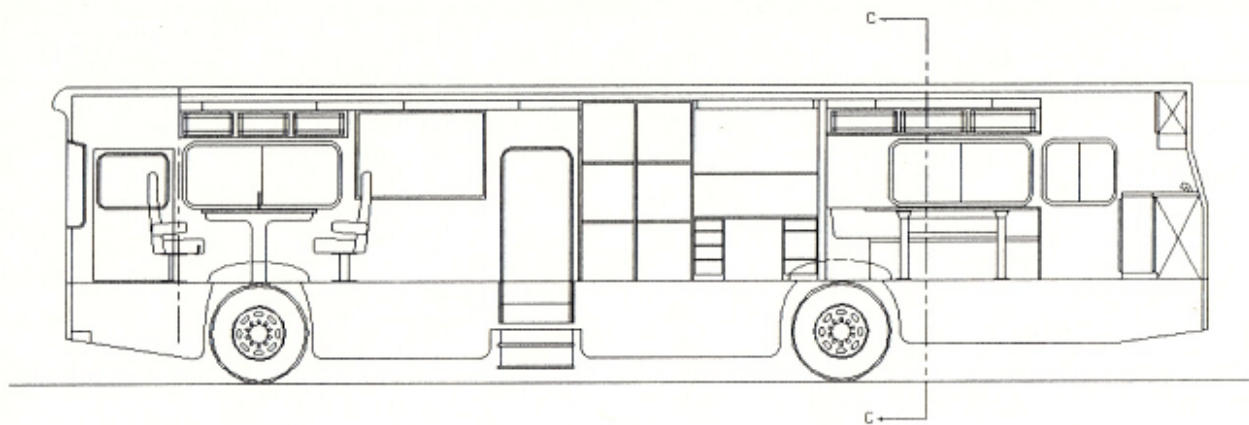



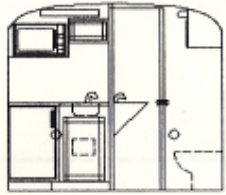
INTERIOR ROADSIDE



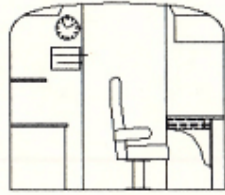
INTERIOR CURBSIDE

THIS DOCUMENT CONTAINS PROPRIETARY INFORMATION AND SHALL NOT BE USED OR REPRODUCED OR ITS CONTENTS DISCLOSED, IN WHOLE OR IN PART, WITHOUT THE PRIOR WRITTEN CONSENT OF CLEGG INDUSTRIES, INC.

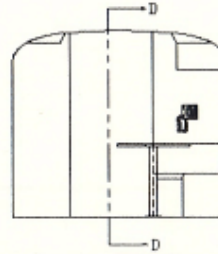
 <b>CLEGG INDUSTRIES, INC.</b>		15-04-M
		1/2" = 1'
SEA/TAC INTERIOR WIRE ELEVATIONS		
PORT OF SEATTLE COMMAND CENTER		
A-04330-00	040330-00	



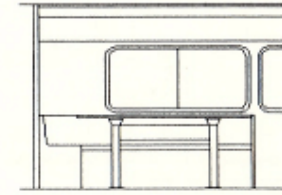
VIEW A-A



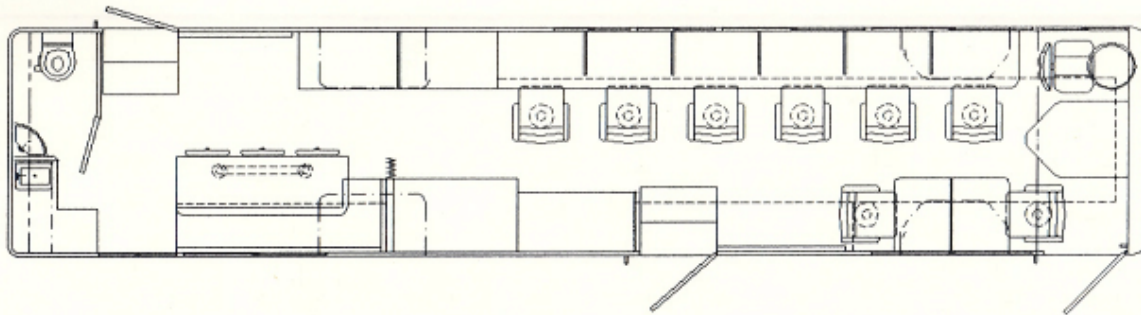
VIEW B-B



VIEW C-C




VIEW D-D



PLAN VIEW

THIS DOCUMENT CONTAINS PROPRIETARY INFORMATION, AND SHALL NOT BE USED OR REPRODUCED OR ITS CONTENTS DISCLOSED, IN WHOLE OR IN PART, WITHOUT THE PRIOR WRITTEN CONSENT OF CLEGG INDUSTRIES, INC.

	CLEGG INDUSTRIES INC.	11-04-05
NO.		1/2" = 1'
SEA/TAC INTERIOR PLAN & ELEVATIONS		
PORT OF SEATTLE COMMAND CENTER		
A-040330-01		040330-003

# PORT OF SEATTLE COMMAND CENTER

